

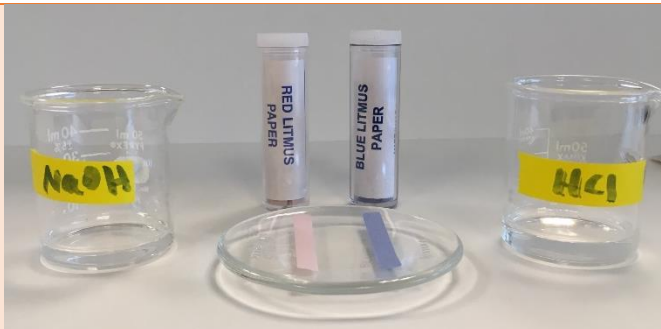
VALENCIA COLLEGE

Chemistry

Lab Technique 13: Using Litmus Paper

Litmus paper is used to determine the acidity or basicity of a solution.

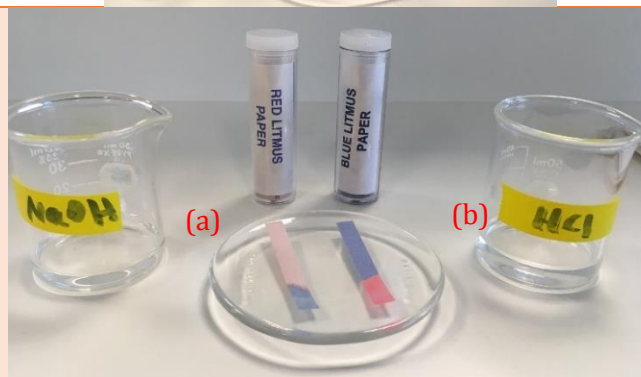
Place a sheet of litmus paper on a clean, dry watch glass or paper towel.



Dip a clean, dry stirring rod into the solution; then touch the litmus paper with it.



- A basic solution turns red litmus paper blue.
- An acidic solution turns blue litmus paper red.



Dispose of the litmus paper in the regular trash can.

Note: If the litmus paper does not change color, all you can conclude is that the solution is:

- not basic if you used red litmus paper.
- not acidic if you used blue litmus paper.